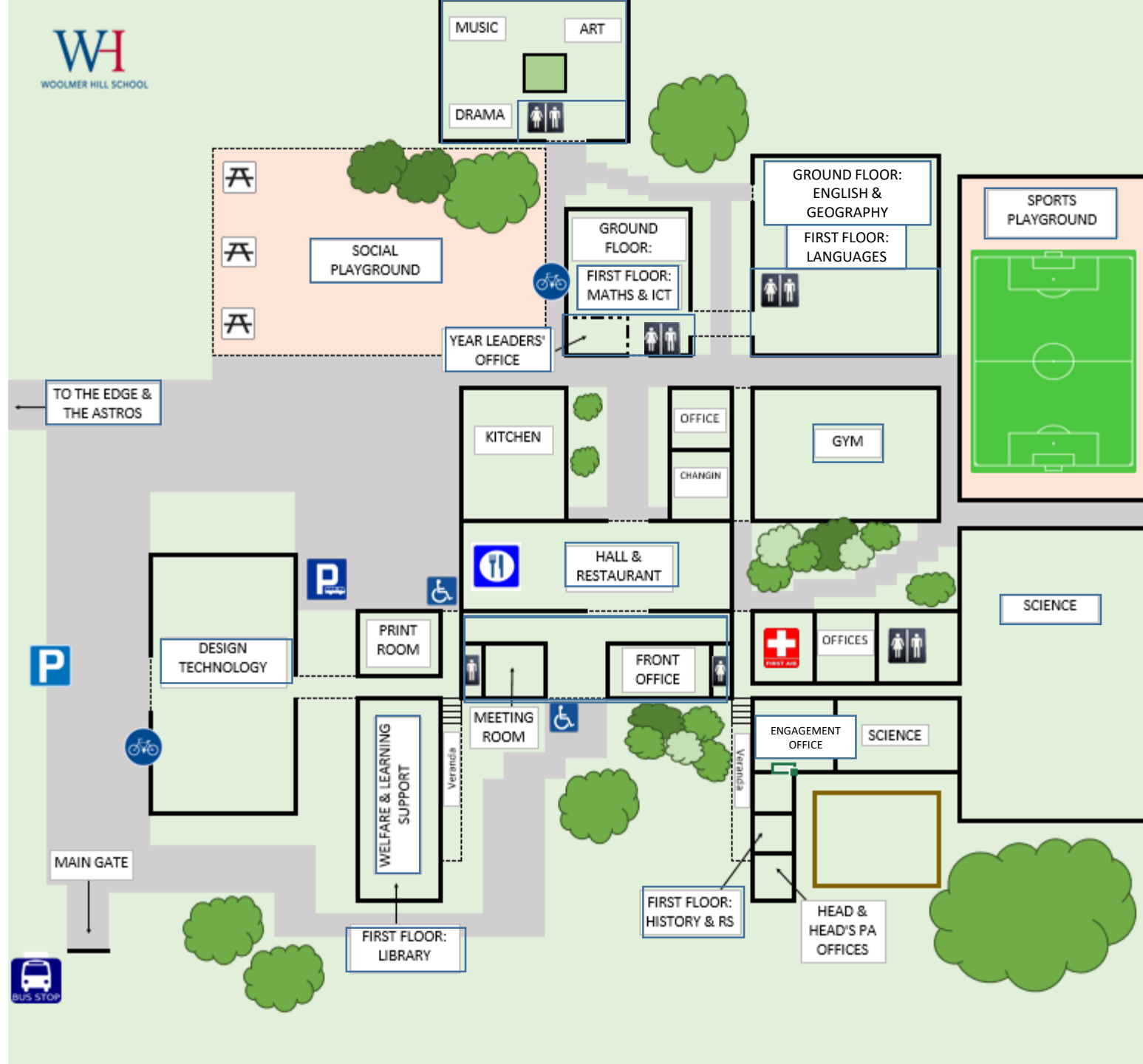


Welcome to Woolmer Hill!

Please hover over the map
to find links to different
areas of the school.

Once you have explored,
try answering our [QUIZ!](#)



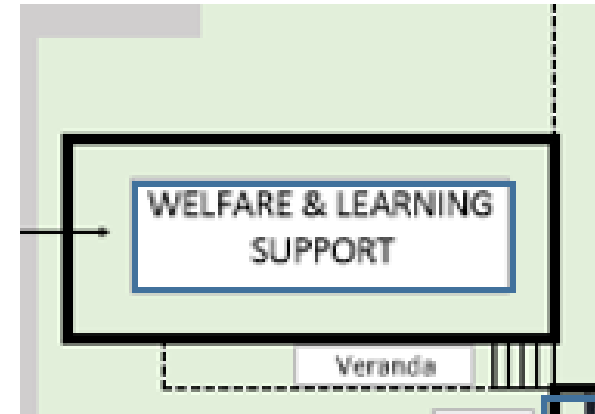
Year Leaders' Office



- Where?
 - In B block, on the ground floor. There is an external door and one that can be accessed via the main entrance to B block
- Who?
 - The Year Leaders and Assistant Year Leaders! You will be able to find Mr Poeti, Miss Rowley and Miss Smallwood-Conway here – that's if they aren't out and about looking after you all!
- Why?
 - If you are worried or concerned, or just want to say hello – just pop in and see how the team are. Miss Rowley loves her books and loves a recommendation, why not pop in and tell her what you are reading? Or have a chat about Harry Potter – she is a big fan! Or why not let Mr Poeti and Miss Smallwood-Conway know how your team did against theirs at the weekend? Mr Poeti supports West Ham and Miss Smallwood-Conway supports Arsenal!

[Return to map](#)

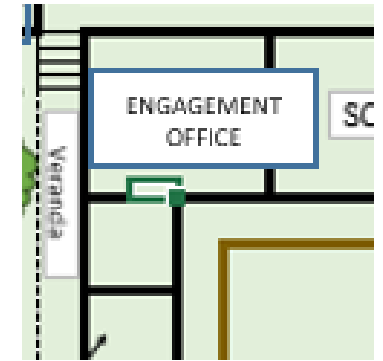
Student Welfare and Learning Support



- Where?
 - In A block, on the ground floor, under the Library. You can enter via the back entrance next to the end of the Dining Hall on the Social Playground side of the building
- Who?
 - Mrs Neil leads her happy team of Learning Support Assistants from here. Quite often they will be in your lessons, helping you, but this is also a welcoming place for you at break or lunch
 - Miss Fry, Miss Fitzwilliams and Mrs Cole are also based here as your Student Welfare Team
- Why?
 - If you are upset or worried then come and speak to the Welfare team. There are also lots of opportunities to get involved in mindfulness activities and even just to have a chat

[Return to map](#)

Engagement and Medical Room



- Where?
 - In A block, on the ground floor. You can get there via the courtyard by the Gym and the Sports Playground. Just over the corridor is the Medical Room
- Who?
 - This is where you will find your Engagement Leaders – Miss Jones and Mr Power. It is also home to our Lesson Cover Supervisors, Attendance Officer and Engagement Administrator. It's also staffed by some of our First Aiders
- Why?
 - If you want some advice, have got lost or just want to talk to someone, then come here. We will also look after you if you have an accident at school

[Return to map](#)

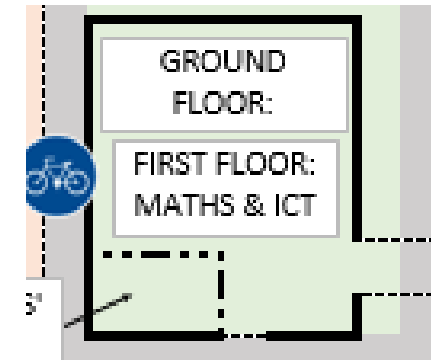
English



- Where?
 - In D block, on the ground floor. The entrance is by the big tree at the back of the building and the exit is out by the bridge
- Who?
 - There are 5 passionate English teachers just waiting to imbue you with a love of reading and writing, plays and poetry! The teachers are Ms Chortok, Mrs Pope, Mrs de Gruchy, Miss Rowley and Mrs Potter
- Why?
 - You will have lots of English lessons in this block, but there are also opportunities to take part in clubs such as Journalism, Creative Writing and Public Speaking, throughout your time at Woolmer Hill

[Return to map](#)

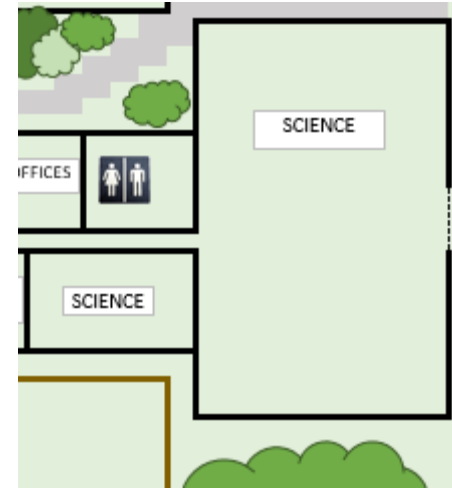
Mathematics and IT



- Where?
 - The whole of B block is taken up with Maths and IT! There are 2 Maths classrooms and 1 IT suite on the ground floor and 3 Maths and 1 IT upstairs. Enter via the double doors opposite the Dining Hall
- Who?
 - Mr Poeti will be here (not much of a walk from the Year Leaders' office as they are in the same block!) as he is the lead IT/Computing teacher. In Maths you will find Miss Stringer, Mr Brown, Mr Walker, Mrs Cam, Mrs Denton and Miss Williams
- Why?
 - Loads of Maths and IT lessons, obviously, but also clubs such as Coding Club and Maths Challenge

[Return to map](#)

Science



- Where?
 - Look out for the bangs and smells emanating from the corridors of A block! You'll find Science at the far end of the school, accessed via the Sports playground
- Who?
 - A team of passionate Chemists, Biologists and Physicists are led by Dr Elliott. She is joined by Miss Dixon, Mr Cook, Mrs Henderson-McClane, Mr Donachie and Mr Pullan
- Why?
 - Lots of Science lessons are found here – and all the clubs that go with them!

[Return to map](#)

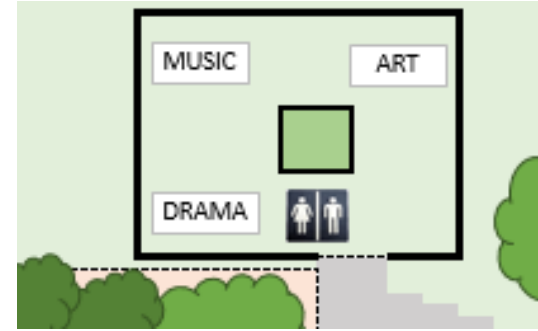
Humanities

- Where?
 - In D block, on the ground floor for Geography, and upstairs in A block for History and Religious Education
- Who?
 - The Humanities team is huge! Inspirationally led by Ms Collins the Humanities team is split into:
 - *Geography – Mrs Hawkswell, Mr Watkins, Mrs Molloy, Mr Williams and Mr Clayton*
 - *History – Ms Collins, Mr Barraud, Mr Lester-Smith and Miss Cloete*
 - *Religious Studies – Miss Whitaker*
- Why?
 - For your fun and thrilling Humanities lessons!

[Return to map](#)



Creative Arts



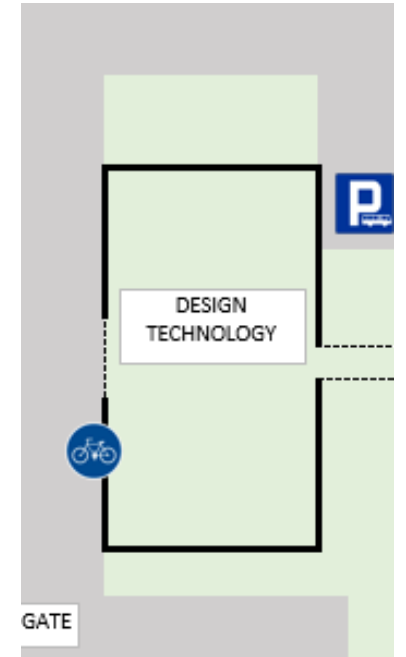
- Where?
 - In C block, at the rear of the school and next to the social playground. Here you will find our awesome Art ateliers, marvellous Music rooms and our daring Drama studio
- Who?
 - Mr Nash (Music), Mrs White and Miss Preston (Art), and Mrs Boorman and Miss Henfrey (Drama) are waiting to get your creativity going!
- Why?
 - Make use of this space throughout the week, not just for lessons. Whether it is Art or Drama club, the school play or jazz band – there is always something going on!

[Return to map](#)

Design Technology

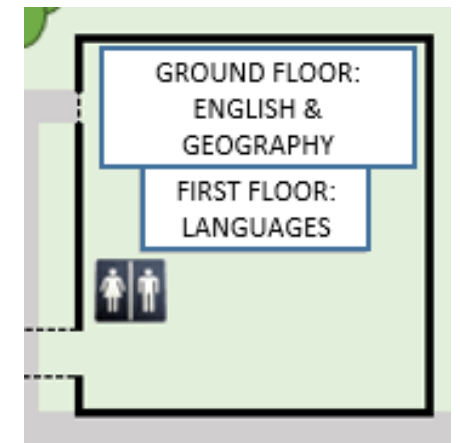


- Where?
 - You will see this department as you come into school. It is in A Block, next to the drive and looking out over the playing fields.
- Who?
 - Design Technology is made up of 3 key areas – Food, Textiles and Product Design. Miss Everson, Mr Quibell, Miss Preston and Mrs Gardner can't wait to explore these areas with you!
- Why?
 - Whether you are the next Ralph Lauren, Gordon Ramsay or James Dyson, this is the place for you. All innovators are welcome!



[Return to map](#)

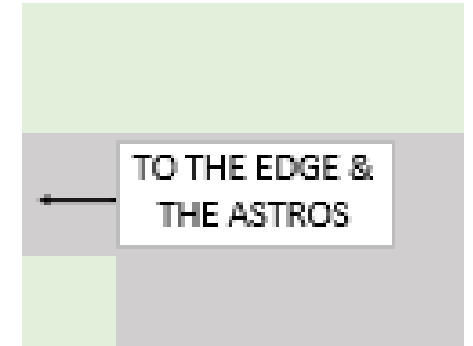
Modern Foreign Languages



- Where?
 - In D block, on the first floor. Like Maths or IT, you enter via the double doors in B Block before heading upstairs, along the corridor and over the bridge into Languages!
- Who?
 - Miss Reynolds, Ms Riddell and Mrs Haroon are looking forward to growing your passion for languages and culture
- Why?
 - All of your language lessons will be here, as well as our language clubs and activities

[Return to map](#)

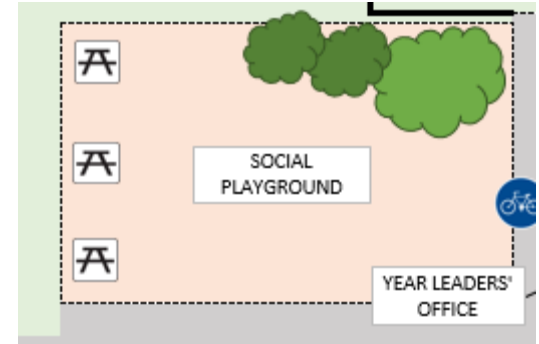
Physical Education at The Edge



- Where?
 - Time for a walk! As part of your warm up for PE you will get to pass through our amazing playing fields as you make your way to our state of the art facilities at The Edge
- Who?
 - Our passionate team of Mr Chippendale, Mrs Worsell, Mr Williams and Miss Smallwood-Conway can't wait to find our next sporting hero!
- Why?
 - Whether you are an aspiring England rugby international, professional footballer, Olympic sprinter or Commonwealth netballer; this is the place for you! With Core PE throughout your time here and clubs after school every day, your talent will get a chance to shine! You can also use the Astro at break and lunch for football

[Return to map](#)

The Social Playground

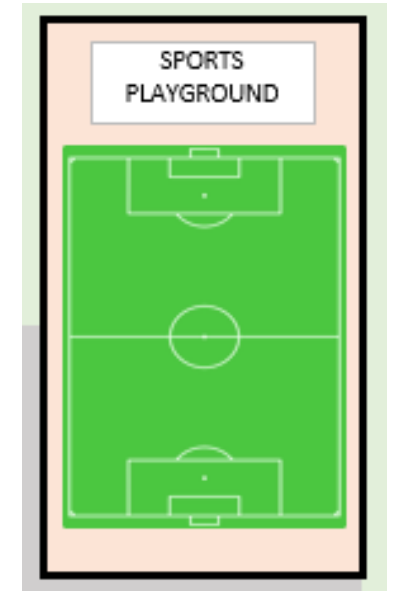


- Where?
 - The main playground – you will see this as soon as you come into the school as it is at the top of the path that you will follow from the car park.
- Who?
 - A mix of year groups will be on this playground, don't worry, there will be key teachers out on duty if you need to ask any questions!
- Why?
 - This is where students go if they want to chat, eat their lunch or just relax. No footballs allowed on this playground!

[Return to map](#)

The Sports Playground

- Where?
 - At the back of the school, alongside the Gym and D Block.
- Who?
 - A mix of year groups use the Sports playground at break and lunch, and you will also find teachers here on duty at those times
- Why?
 - There are football goals, basketball hoops and even an outdoor table-tennis table. Get your game on and come and have a go!



[Return to map](#)

The Gym



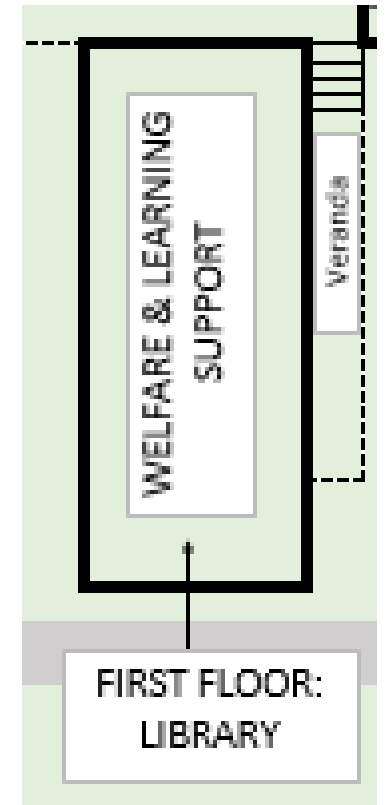
- Where?
 - The Gym is found surrounded by A Block, D Block and the Sports Playground.
- Who?
 - Depending on the time of year, you might find that this has PE staff or even your Pastoral staff here, however, Mrs Atkinson, our Exams Officer, is always here!
- Why?
 - PE staff will be here because you will have some PE lessons in the Gym, particularly Dance, Table-tennis and Gymnastics. Pastoral staff might be here in the morning because it is an assembly space. However, for chunks of the year it is set up as our dedicated Exam Hall – make sure that you are quiet when the Exams are on!

[Return to map](#)

The Library

- Where?
 - In A Block, above the Student Welfare And Learning Support Hub. Head through the door at the back of the main building by the Social Playground and head upstairs
- Who?
 - Our Librarian, Mrs Ewing, cannot wait to find the right book for you as you try to become one of our 'Millionaire Readers'
- Why?
 - At break and lunch you can use the Library computers, play board games, have a quiet chat or just read! You will also use the Library in lessons, particularly English, for research and reading

[Return to map](#)



The Dining Hall

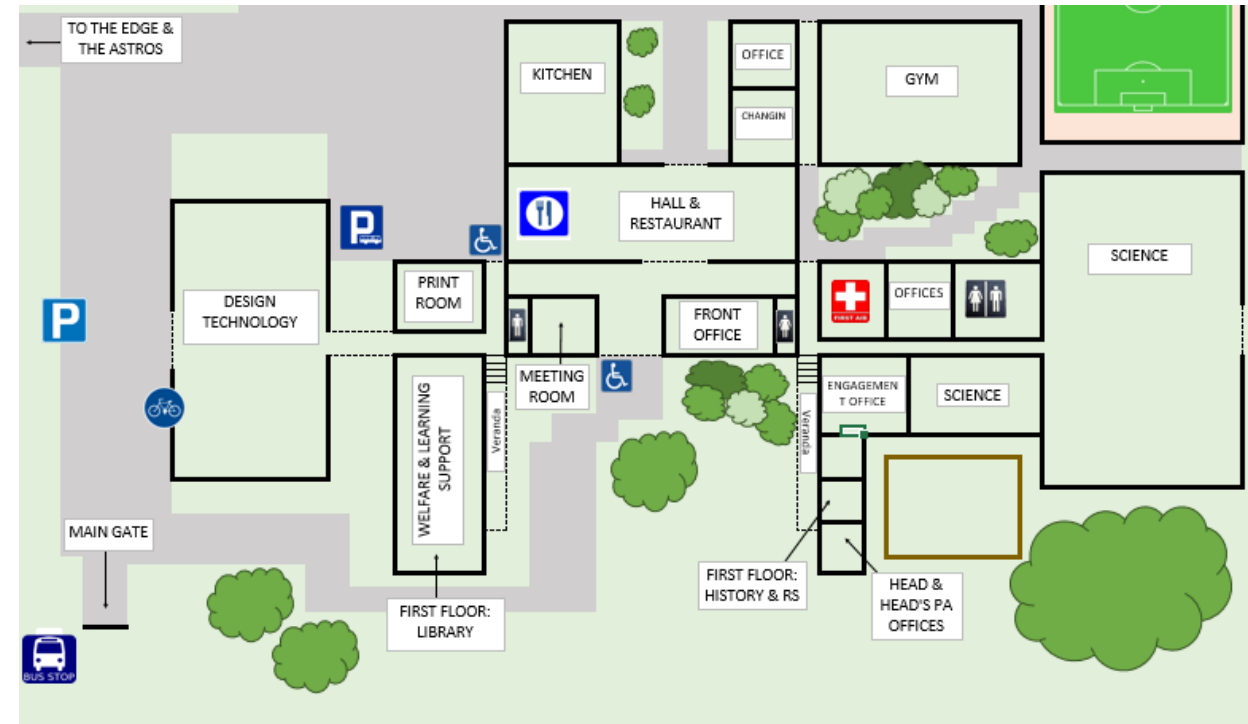


- Where?
 - In A block, you enter via the double doors opposite B Block
- Who?
 - All year groups use the Dining Hall to get and eat their food. Staff will be on duty here at break and lunch.
- Why?
 - Fancy a snack at break? A full hot meal at lunch? Come and use our restaurant and the tables in the Dining Hall. We will also have assemblies in the Hall, and we also use it for our School Show!

[Return to map](#)

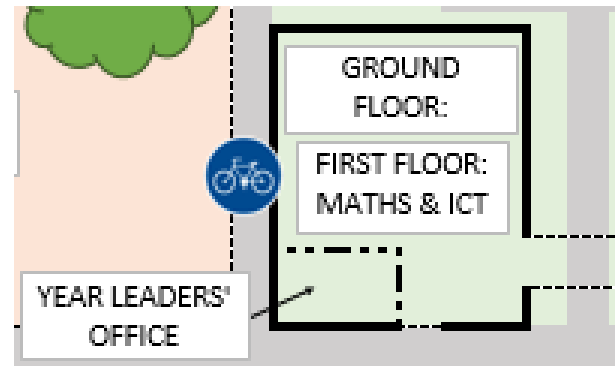
A Block

- Where?
 - The Main Block as you come into the school
- Who?
 - Where do I start?! DT, Student Welfare, Learning Support, the Library, the Dining Hall, the Engagement Team, Science, Humanities and more!
- Why?
 - This is the hub of the school, you will use this building the most! There are toilets here that can be used at break and lunch.



[Return to map](#)

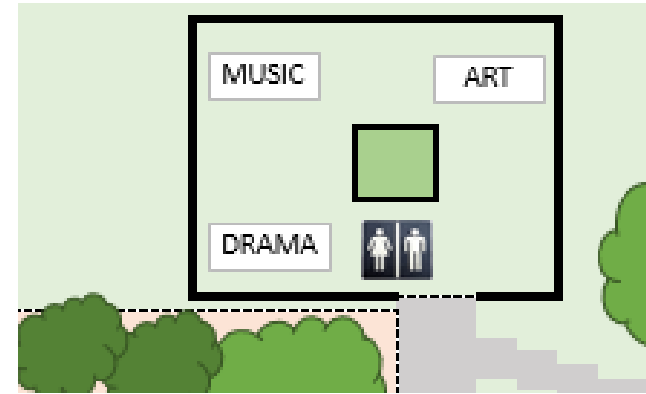
B Block



- Where?
 - Opposite the Dining Hall and clad in green – easy to find!
- Who?
 - Maths, IT and the Year Leaders
- Why?
 - For all your Maths and IT lessons, but also to access Languages on the first floor of D Block, and, of course, to visit the year leaders! There are toilets here that can be used at break and lunch

[Return to map](#)

C Block



- Where?
 - At the back of the school on the other side of the Social Playground
- Who?
 - The arts team are based in here, and you will also find our school counsellor here too. There is also a reflective space for you to use.
- Why?
 - For all of your creative needs! There are toilets here that can be used at break and lunch.

[Return to map](#)

D Block



- Where?
 - Next to the Sports Playground and connected to B Block via the bridge.
- Who?
 - All of Geography, Languages and English
- Why?
 - You will have a lot of lessons here, but also lots of clubs as well. There are toilets here that can be used at break and lunch.

[Return to map](#)

Quiz

Answer the Questions below – how well do you know Woolmer Hill already?

1. In which building would you find an atelier?
2. Which buildings surround the Gym?
3. Which different sports are there available on the Sports Playground?
4. How many subjects can you study in A Block?
5. How many members are there in the Humanities team?
6. Which football teams do Mr Poeti and Miss Smallwood-Conway support?
7. Which author do you think Miss Rowley would enjoy reading?
8. Which two buildings do PE use?
9. In which blocks do you find toilets?
10. Where can you park your bike?
11. Where is the medical room?
12. How would you get to the library?

If you get stuck, have another look: [Return to map](#)

Or, go to the [ANSWERS](#)

Answers

Have a look below and give yourself a point for each correct answer



1. In which building would you find an atelier?
C Block
2. Which buildings surround the Gym?
A Block and D Block
3. Which different sports are there available on the Sports Playground?
Table-tennis, Basketball and Football
4. How many subjects can you study in A Block?
4 (History, RS, DT and Science)
5. How many members are there in the Humanities team?
10
6. Which football teams do Mr Poeti and Miss Smallwood-Conway support?
West Ham and Arsenal
7. Which author do you think Miss Rowley would enjoy reading?
JK Rowling, Author of Harry Potter!
8. Which two buildings do PE use?
The Edge and the Gym

9. In which blocks do you find toilets?
All of them!
10. Where can you park your bike?
next to B Block
11. Where is the medical room?
In A Block, opposite the Engagement Office
12. How would you get to the library?
via the door at the back of the dining hall by the social playground. Then up the stairs!

1-3 Points – a tentative start, go back and have another look, you'll get it soon!

4-6 Points – You're pretty used to it already, maybe just have one more check!

7-10 Points – You're a Woolmer Hill Pro, make sure you help others who aren't as confident as you!